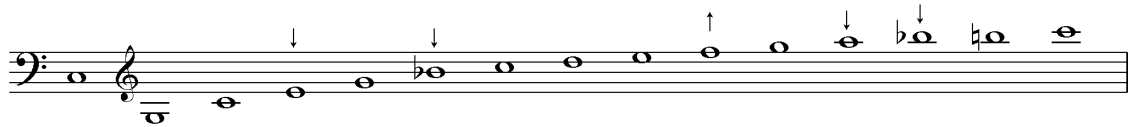


Harmonic Series Chart for Keyed Trumpet in Eb

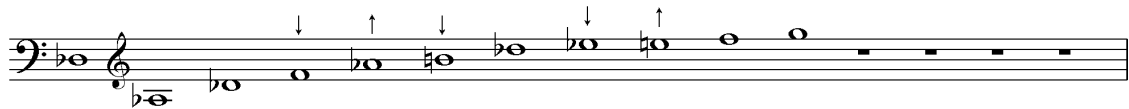
This chart, compiled with the help of Paul Beniston, demonstrates the individual imperfections of each harmonic series. Whilst I have tried to make the chart as comprehensive as possible, the extreme upper harmonics given by each hole are so imprecise in pitch that I have left them off the chart completely.

As with most of the information in this study, I cannot guarantee that this chart will apply to all keyed trumpets and the individual acoustic properties of other trumpets may produce better or worse results than those shown here.

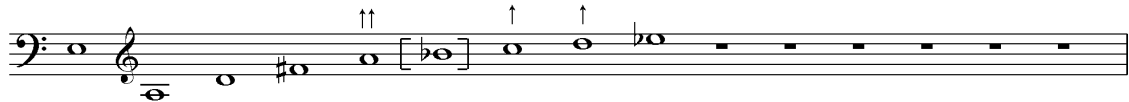
All holes closed



1st finger



2nd finger



3rd finger



4th finger



↑ Sharp
↑↑ Very sharp

↓ Flat
↓↓ Very flat