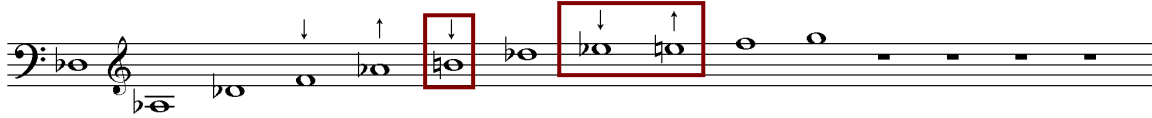
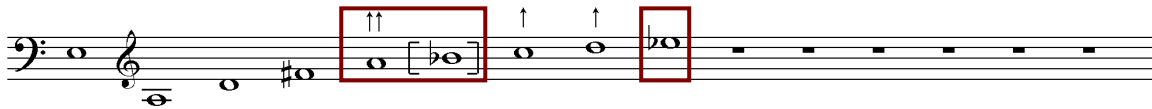


## Harmonic Variations

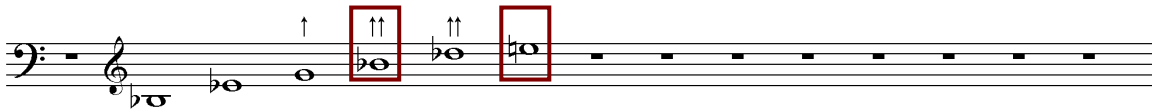
### 1<sup>st</sup> Finger



### 2<sup>nd</sup> Finger



### 3<sup>rd</sup> Finger



As an example, note the imprecise pitch of many of the notes highlighted. The Bb/B is extremely variable in pitch, whilst it is possible to play an Eb using the 1<sup>st</sup> and 2<sup>nd</sup> fingers and an E with both the 1<sup>st</sup> and 3<sup>rd</sup> keys. Although some notes can be 'lipped' into tune, choosing the optimum fingering is still very important.